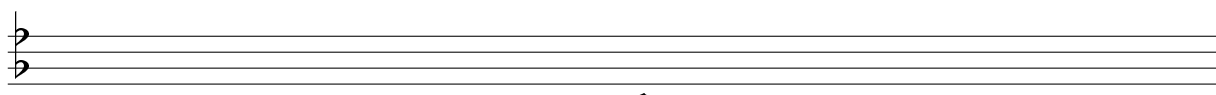
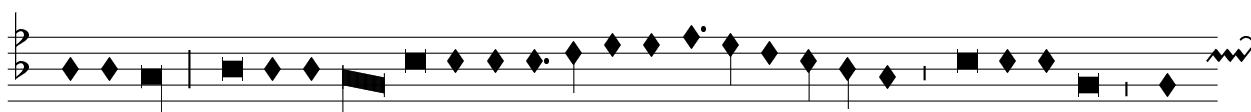
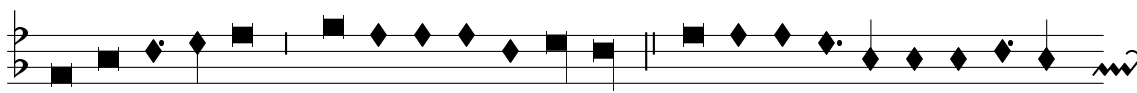


La déploration de la mort de Johannes Ockeghem (Josquin des Prez)

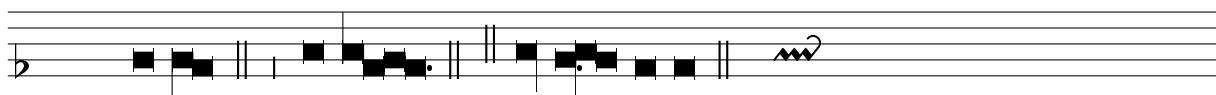
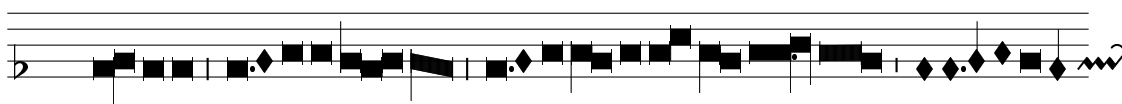
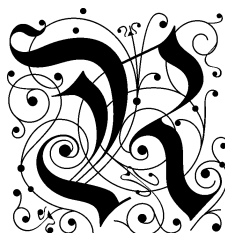


Jolquin

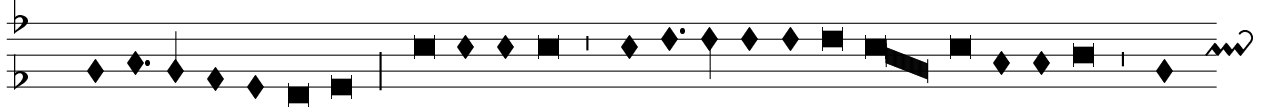
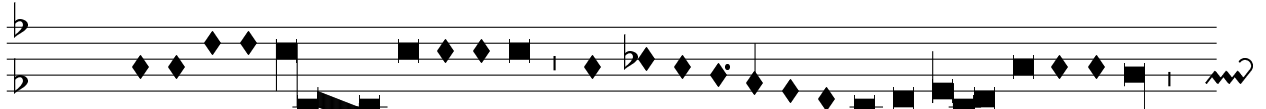
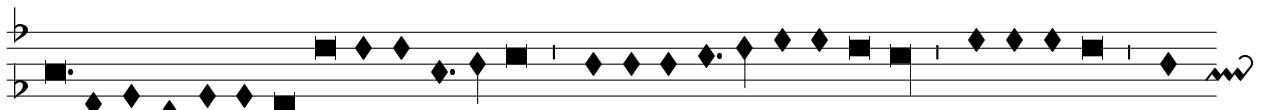
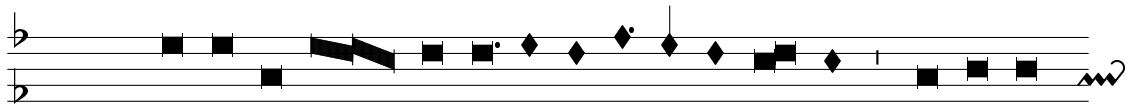
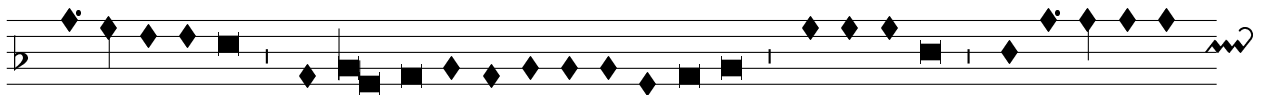
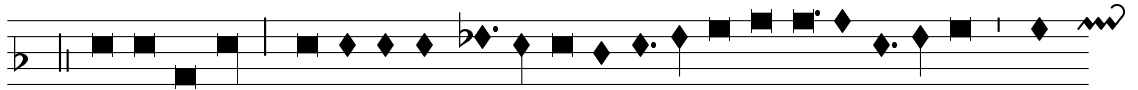
imphel



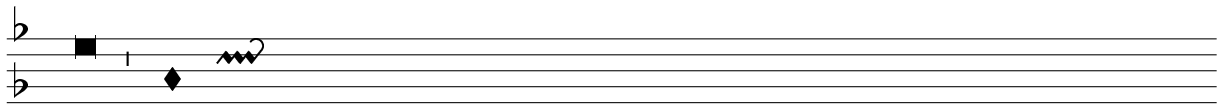
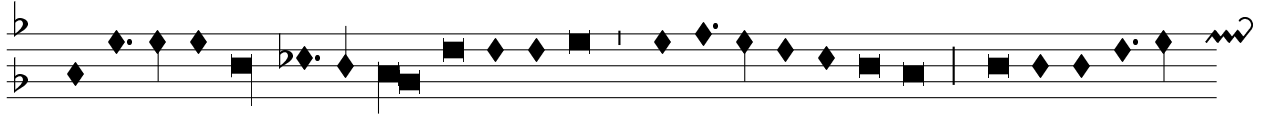
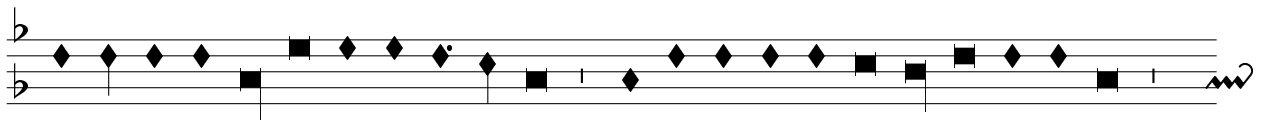
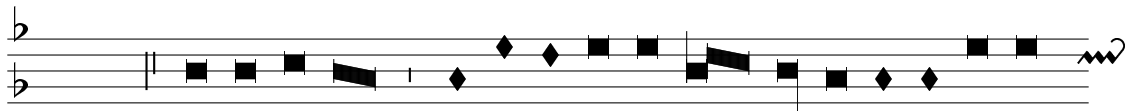
Canon



La déploration de la mort de Johannes Ockeghem (Josquin des Prez)



La déploration de la mort de Johannes Ockeghem (Josquin des Prez)



La déploration de la mort de Johannes Ockeghem (Josquin des Prez)

The first staff begins with a large, ornate initial 'S' in a black and white decorative font. To its right is a treble clef. The staff contains a sequence of notes, including diamond-shaped notes and square notes, with a double bar line and a fermata at the end.

The second staff continues the musical notation with a treble clef, featuring diamond-shaped and square notes, a double bar line, and a fermata.

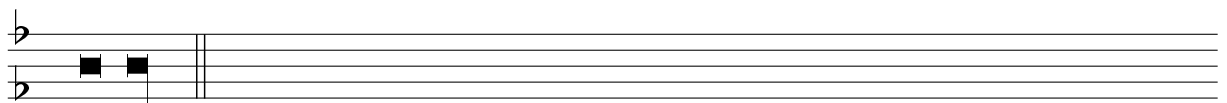
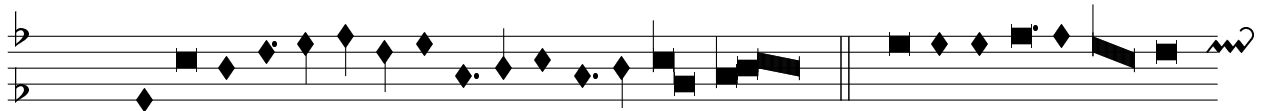
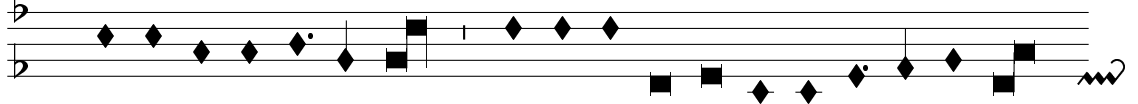
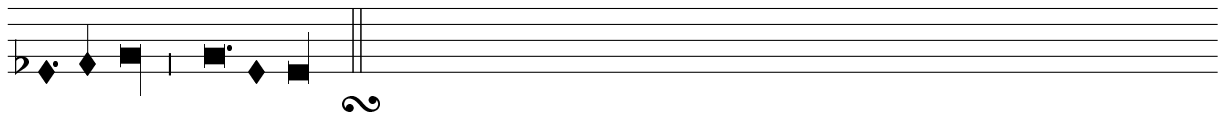
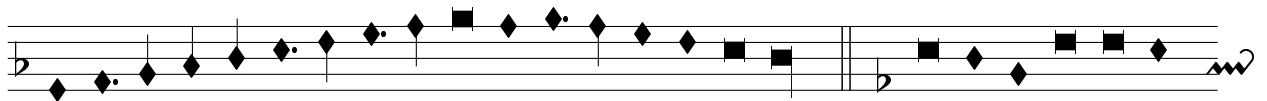
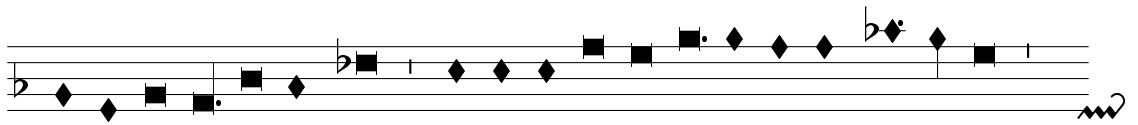
The third staff continues the musical notation with a treble clef, featuring diamond-shaped and square notes, a double bar line, and a fermata.

The fourth staff continues the musical notation with a treble clef, featuring diamond-shaped and square notes, a double bar line, and a fermata.

The fifth staff begins with a large, ornate initial 'S' in a black and white decorative font. To its right is a treble clef. The staff contains a sequence of notes, including diamond-shaped notes and square notes, with a double bar line and a fermata.

The sixth staff continues the musical notation with a treble clef, featuring diamond-shaped and square notes, a double bar line, and a fermata.

La déploration de la mort de Johannes Ockeghem (Josquin des Prez)



*La déploration de la mort de Johannes Ockeghem (Josquin des Prez)*

The image displays a musical score for the piece 'La déploration de la mort de Johannes Ockeghem' by Josquin des Prez. The score is presented in four systems, each consisting of two staves. The first system is distinguished by a large, highly decorative initial letter 'S' on the left side, which is embellished with elaborate scrollwork and flourishes. The musical notation itself uses a mix of diamond-shaped and square-shaped note heads, indicating different rhythmic values. The score includes various rests, bar lines, and a fermata symbol at the end of the fourth system. The overall style is characteristic of early printed music from the 16th century.

*Version 0.2 in 2001.5*